

[3 - BEDROOM]

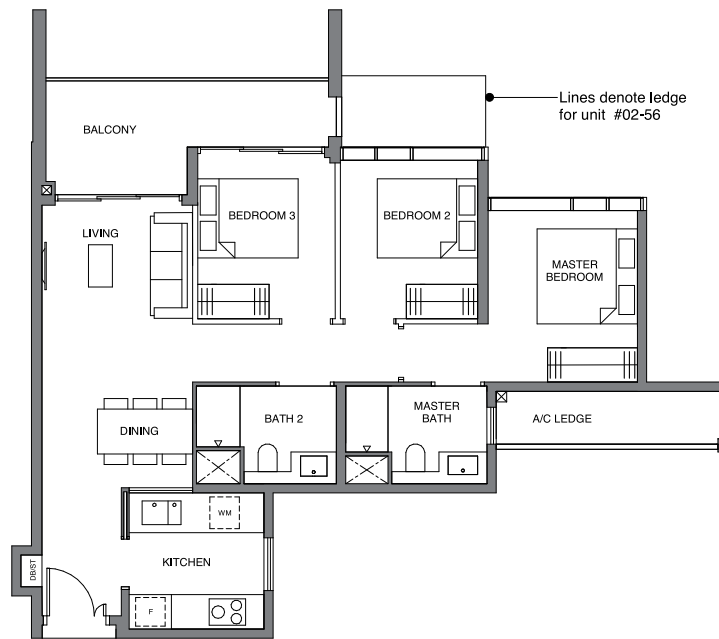


TYPE C1
89 sqm | 958 sq ft

BLOCK 26
#03-06 to #12-06

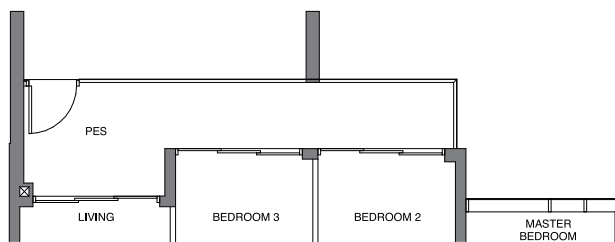
BLOCK 36
#02-45* to #12-45*

BLOCK 38
#02-56 to #12-56



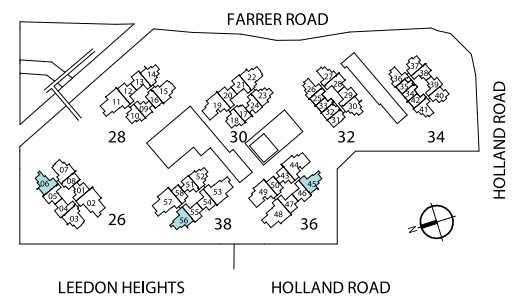
TYPE C1-P
92 sqm | 990 sq ft

BLOCK 38
#01-56



DB/ST: Distribution Board / Storage
F: Fridge
WM: Washer Cum Dryer
* Denotes mirror image

Area includes PES, A/C ledge, balcony and void area (high ceiling). The plans are subject to change as may be required or approved by the relevant authorities. Areas are approximate measurements only and are subject to final survey. Plans are not drawn to scale and do not form part of the contract.



[3 - BEDROOM PREMIUM]

TYPE C2
97 sqm | 1044 sq ft

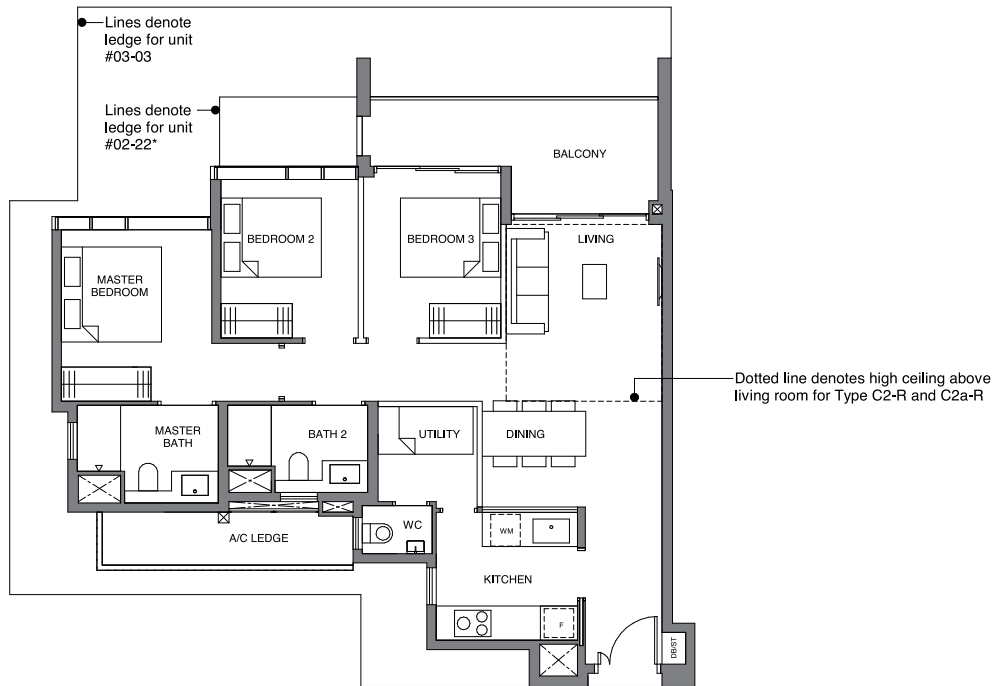
BLOCK 26
#03-03 to #12-03

BLOCK 30
#02-22* to #11-22*

TYPE C2-R
108 sqm | 1163 sq ft

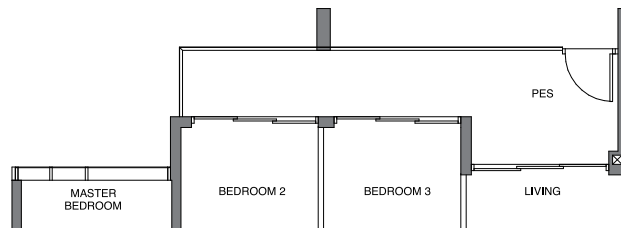
Incl. of 11 sq m | 118 sq ft of void area (high ceiling) above living

BLOCK 30
#12-22*



TYPE C2-P
100 sqm | 1076 sq ft

BLOCK 30
#01-22*



TYPE C2a
97 sqm | 1044 sq ft

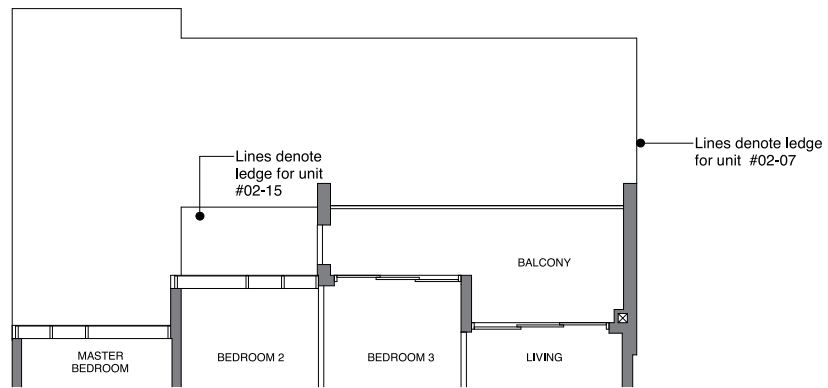
BLOCK 26
#02-07 to #12-07

BLOCK 28
#02-15 to #11-15

TYPE C2a-R
108 sqm | 1163 sq ft

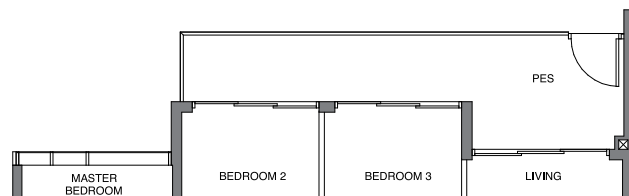
Incl. of 11 sq m | 118 sq ft of void area (high ceiling) above living

BLOCK 28
#12-15



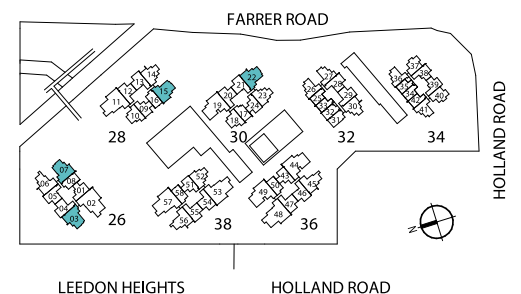
TYPE C2a-P
100 sqm | 1076 sq ft

BLOCK 28
#01-15



DB/ST: Distribution Board / Storage
F: Fridge
WM: Washer Cum Dryer
* Denotes mirror image

Area includes PES, A/C ledge, balcony and void area (high ceiling). The plans are subject to change as may be required or approved by the relevant authorities. Areas are approximate measurements only and are subject to final survey. Plans are not drawn to scale and do not form part of the contract.



[3 - BEDROOM EXCLUSIVE]



TYPE C3
126 sqm | 1356 sq ft

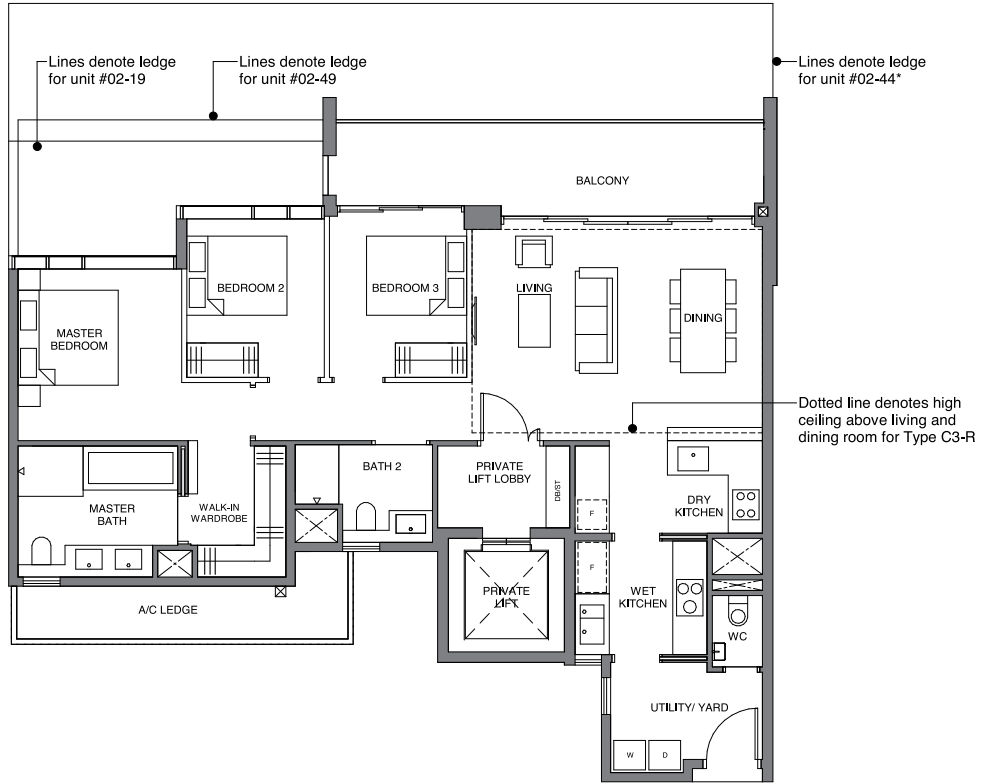
BLOCK 30
#02-19 to #11-19

BLOCK 36
#02-44* to #12-44*
#02-49 to #12-49

TYPE C3-R
149 sqm | 1604 sq ft

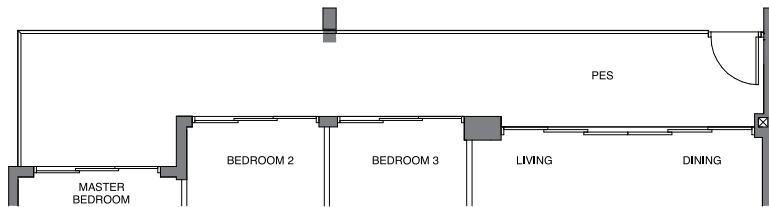
Incl. of 23 sqm | 248 sq ft of void area
(high ceiling) above living & dining

BLOCK 30
#12-19



TYPE C3-P
138 sqm | 1485 sq ft

BLOCK 30
#01-19



D: Dryer
DB/ST: Distribution Board / Storage
F: Fridge
W: Washer
* Denotes mirror image

Area includes PES, A/C ledge, balcony and void area (high ceiling). The plans are subject to change as may be required or approved by the relevant authorities. Areas are approximate measurements only and are subject to final survey. Plans are not drawn to scale and do not form part of the contract.

